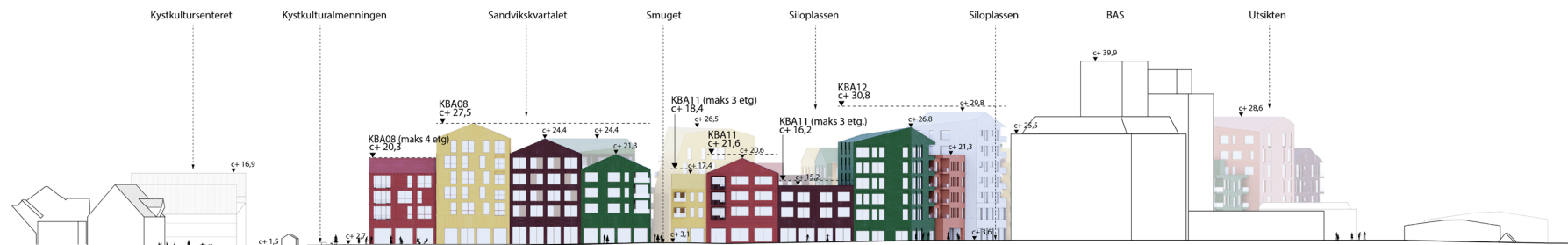
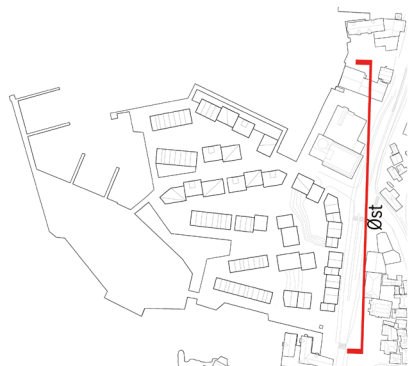


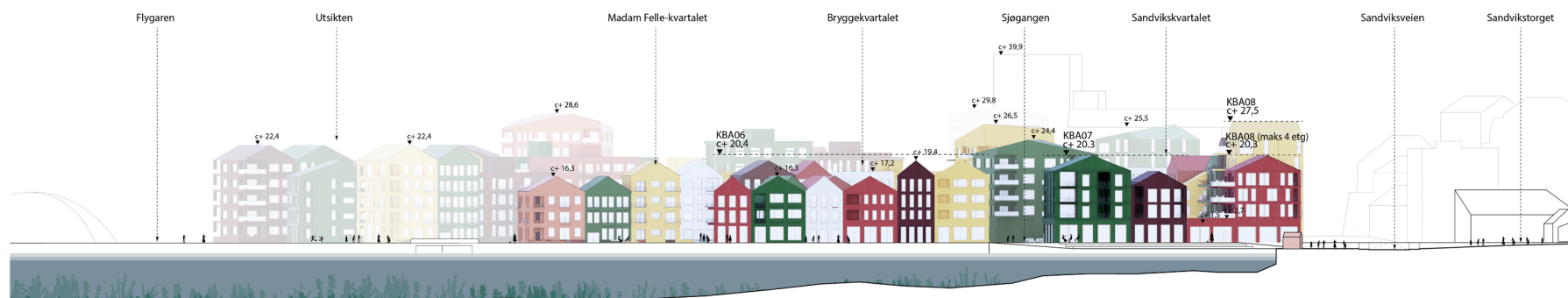
# Situasjonssnitt Øst



\*Alle eksisterende bygg på Naumanntomten skal rives



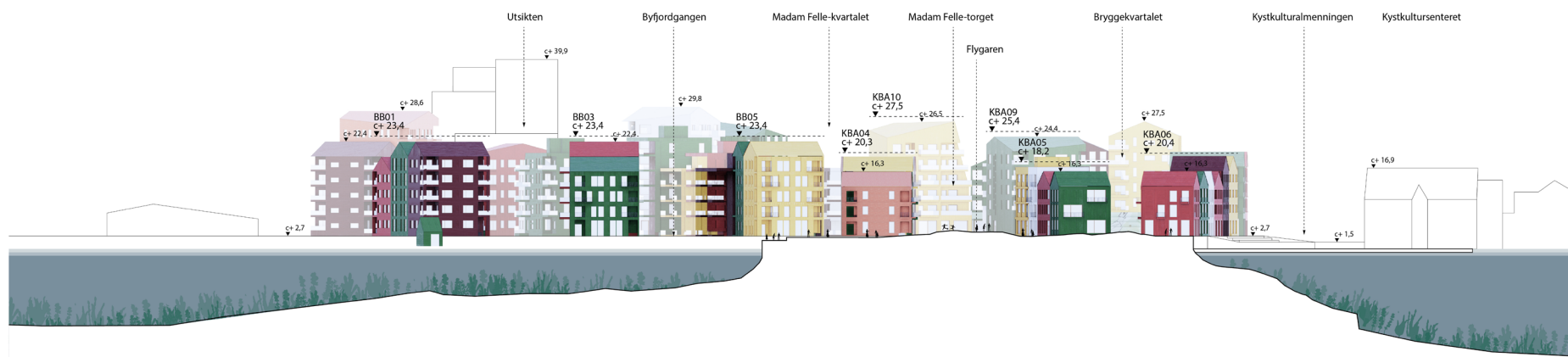
# Situasjonssnitt Sør



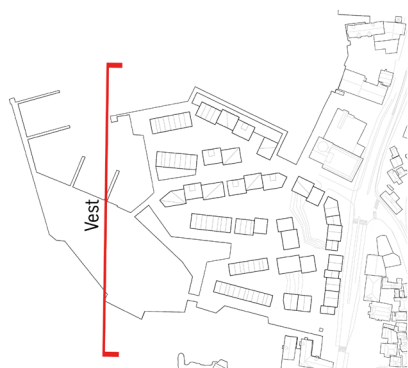
\*Alle eksisterende bygg på Naumanntomten skal rives



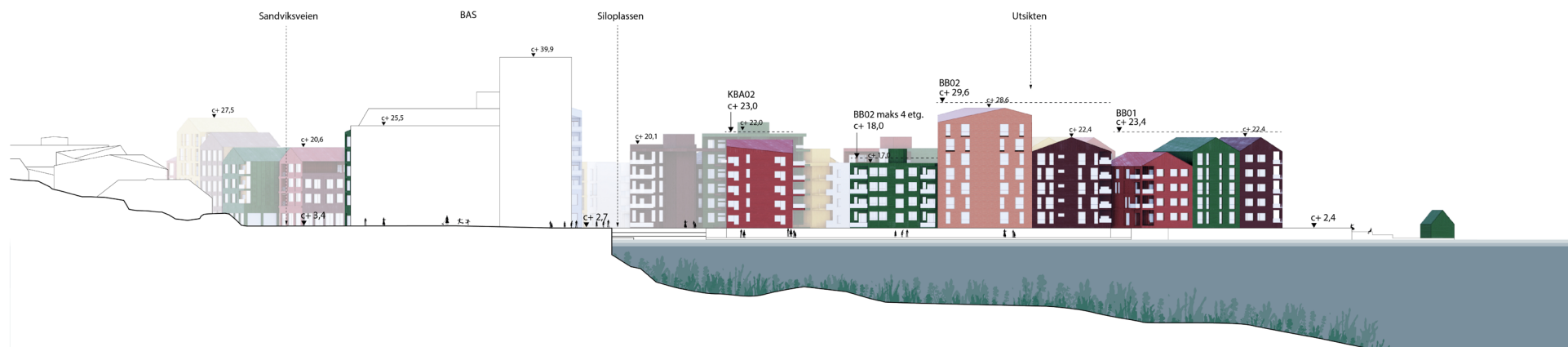
# Situasjonssnitt Vest



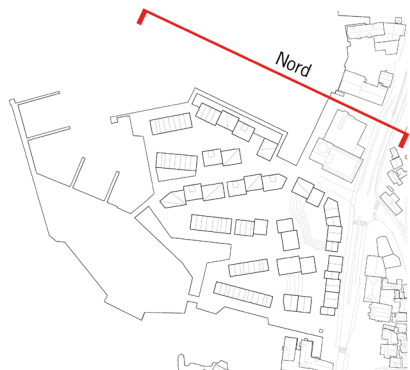
\*Alle eksisterende bygg på Naumanntomten skal rives



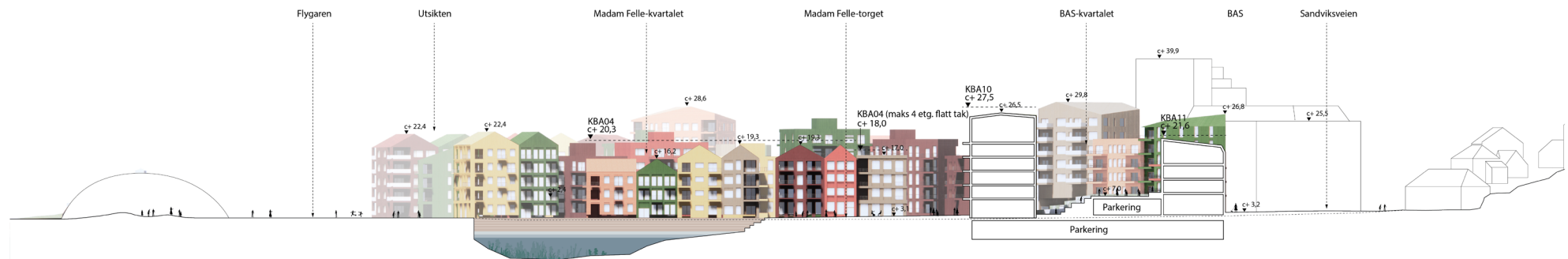
# Situasjonssnitt Nord



\*Alle eksisterende bygg på Naumanntomten skal rives



# Situasjonssnitt Madam Felle-torget



\*Alle eksisterende bygg på Naumanntomten skal rives

